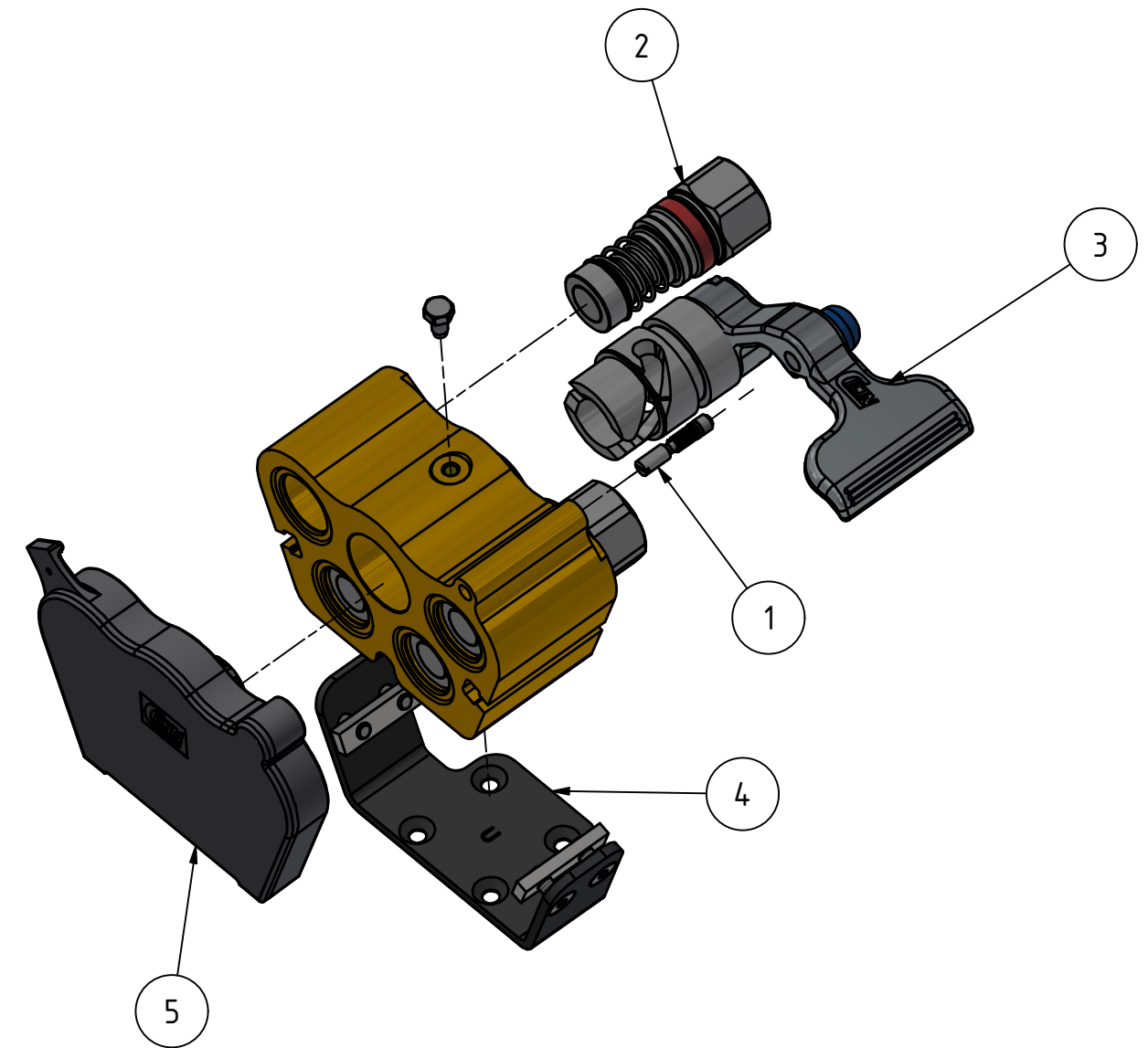
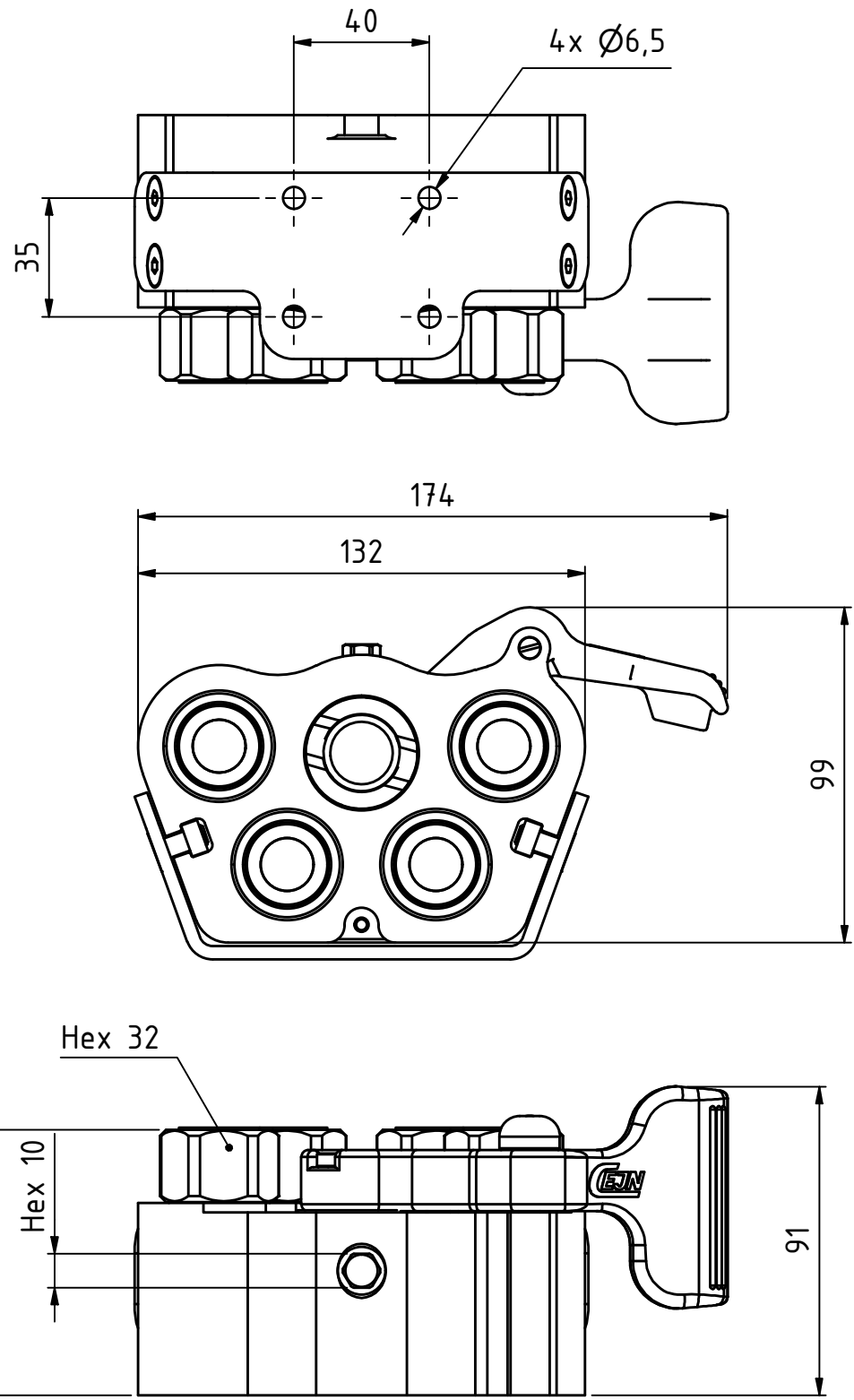


This document must not be copied, either completely or in part, without permission. Any infringement will have legal consequences ©



Product No. 109324201	
Nominal flow Ø DN:	12,5 mm
Connection Stroke:	
Max WP Connected:	350 bar
Max WP Disconnected:	350 bar
Min BP Connected:	1200 bar
Min BP Disconnected:	1200 bar
Temperature range:	-30°C - 100°C
Connection:	BSP 1/2" Female
Sealing material:	NBR
Hexagon:	

5	1	Dust Cap		109321007
4	1	Kit Mounting Br.	Steel	109324936
3	1	Lever assembly (DN12)		109324951
2	4	Coupling DN12.5 insert		105651908
1	1	Lock in house Kit		109324992
Item	Qty	Description	Material	Part Number
		Scale 1 : 2	Drawn EP	Checked JoEr
		Appr. PMB	ECO 12400	Date 2019-02-28
		Drawing No. 109324201		Issue C
		Assembly Drawing		Sheet 1 /(1)