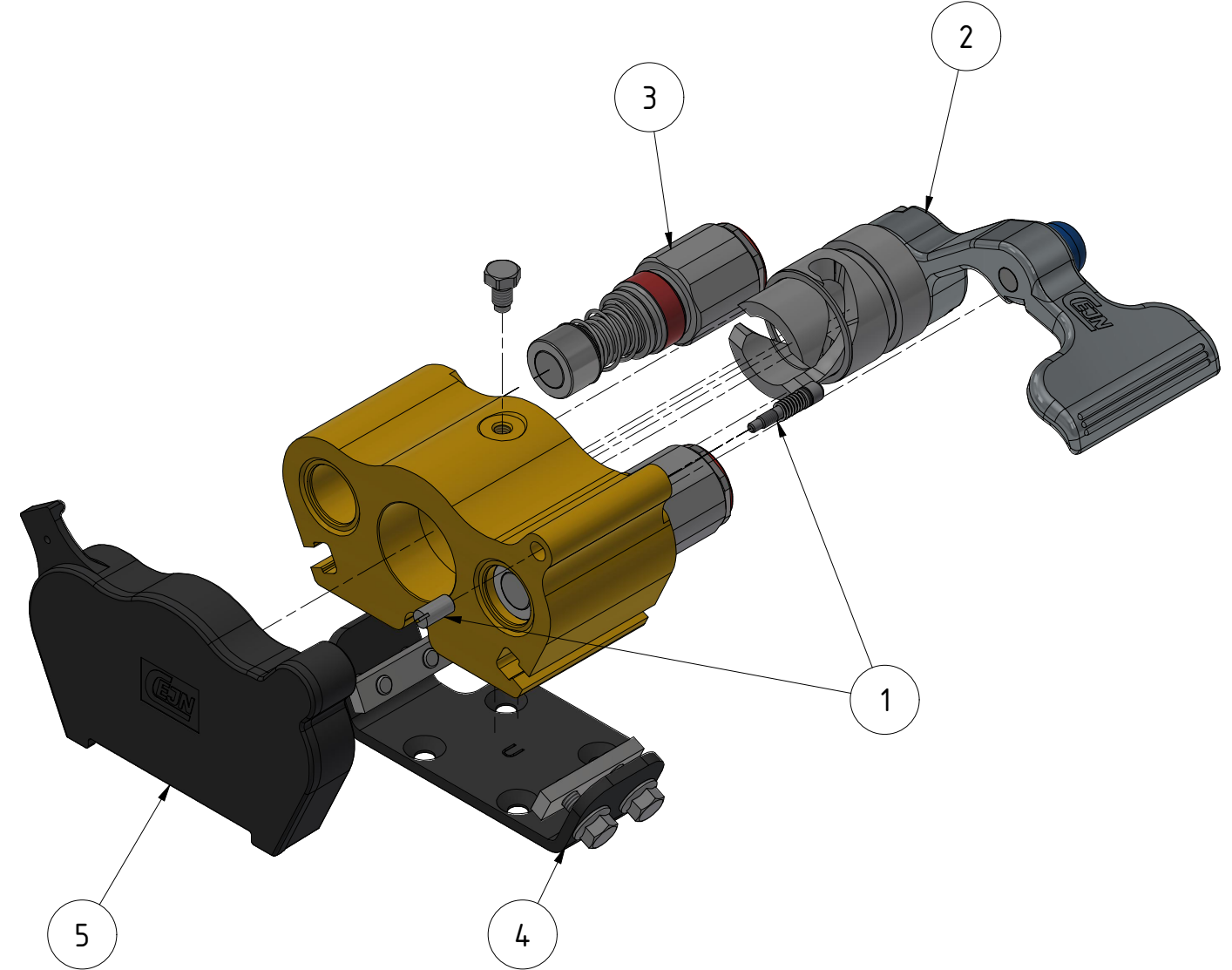
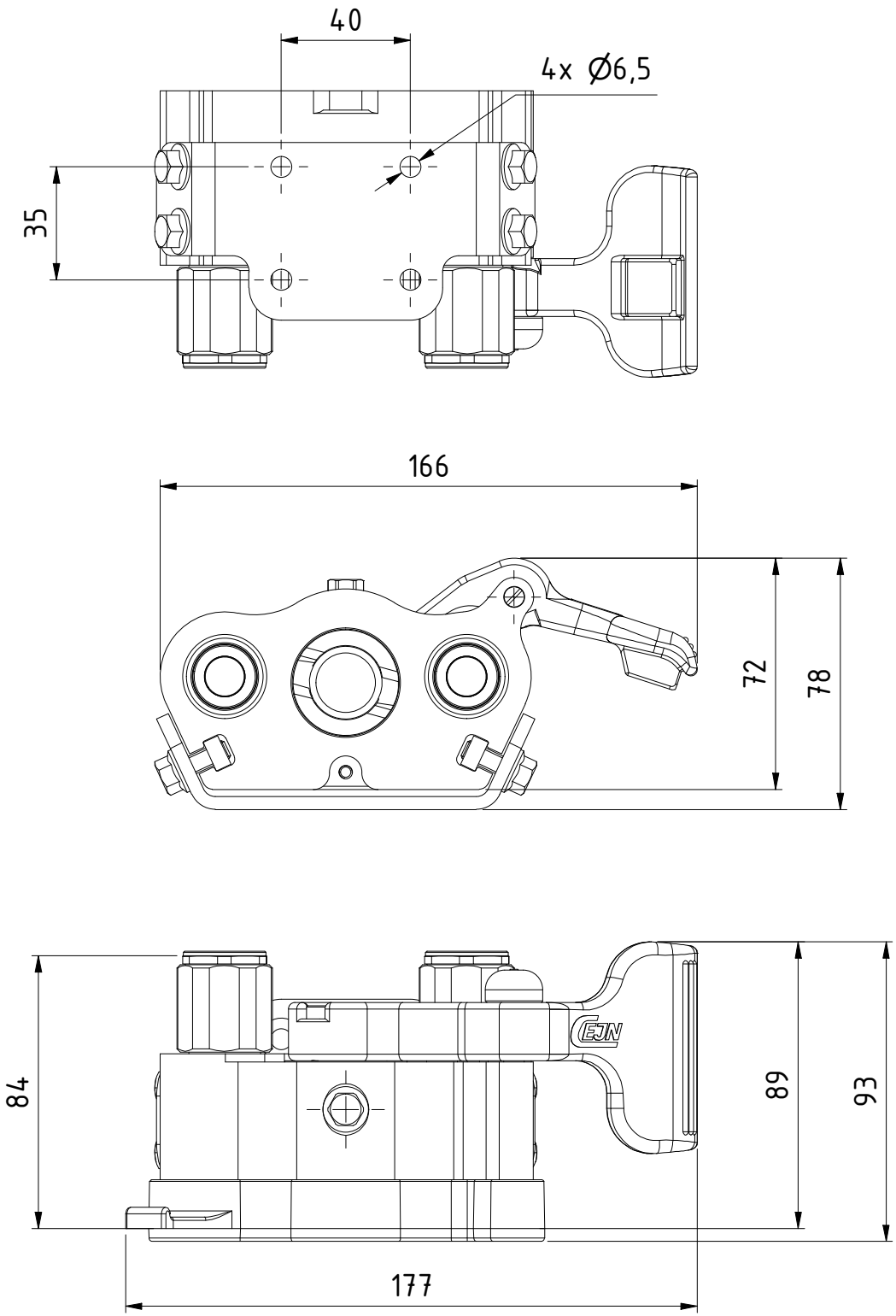


This document must not be copied, either completely or in part, without permission. Any infringement will have legal consequences ©



Product No. 109322100	
Nominal flow Ø DN:	10 mm
Connection Stroke:	mm
Max WP Connected:	350 bar
Max WP Disconnected:	350 bar
Min BP Connected:	1200 bar
Min BP Disconnected:	1200 bar
Temperature range:	-30°C - 100°C
Connection:	WEO 1/2" (DN12.5)
Sealing material:	NBR
Hexagon:	

5	1	Dust Cap		109321000
4	1	Kit Mounting Br.	Steel	109324930
3	2	Coupling DN10 - WEO DN12.5		103651909
2	1	Lever assembly (DN10)		109324950
1	1	Lock in house Kit		109324992
Item	Qty	Description	Material	Part Number

	Drawn	CABEMPE07	Checked	JoEr	Approved	PMB	Date	2019-10-01
	Multi-X GII Duo DN10 Female - WEO 1/2"				Former No.		Scale	1 : 2
					Drawing No.	109322100	Sheet	1 / (1)
				Issue				A