

This document must not be copied, either completely or in part, without permission. Any infringement will have legal consequences ©

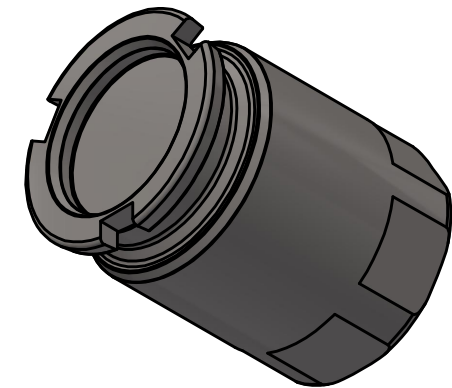
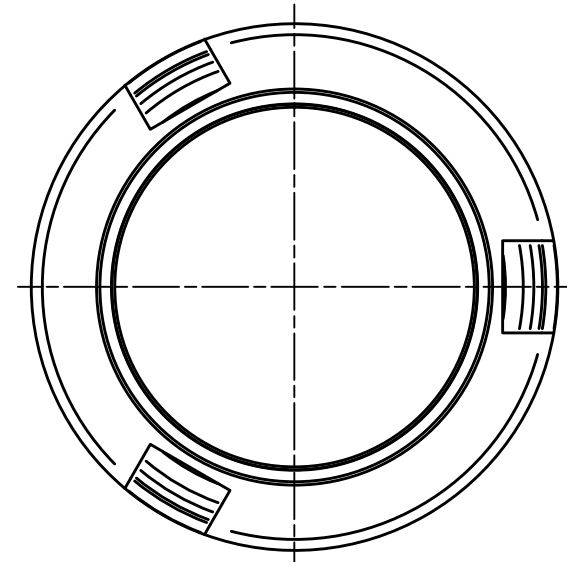
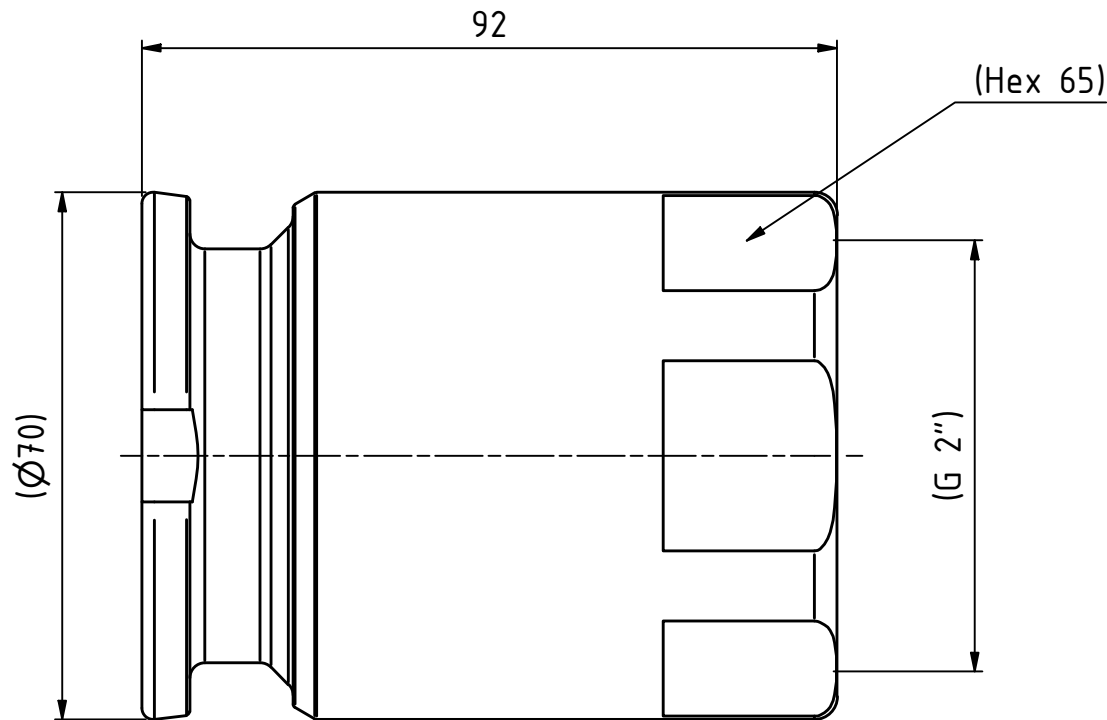


D

C

B

A



1 : 2

Product No. 106205011

Nominal flow Ø DN:	50 mm
Socket:	70 mm
Max WP Connected:	25 bar
Max WP Disconnected:	25 bar
Max Dis/Connect Pressure:	4 bar
Max Flow (Kerosene 20°C):	600 l/min
Temperature range:	-20°C - +60°C
Connection:	G 2" (BSPP)
Seal material:	FKM
Body material:	316L Stainless Steel
Hexagon/Octagon:	65
Configuration Code:	TBSEZ01
Weight:	1000 g

1	1	2" Tank unit, Stainless Steel, G 2", FKM	316L Stainless Steel
Item	Qty	Description	Material
State	Production	Drawn	CABBW
Checked	JOJ	Approved	JOER
Date	2024-03-21	ECO	Former No.
Scale	1 : 1	Drawing No.	106205011
Issue	A	Sheet	1 / (1)