

This document must not be copied, either completely or in part, without permission. Any infringement will have legal consequences ©



A3

D

C

B

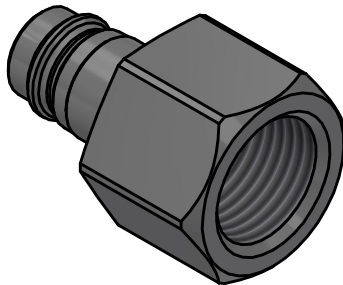
A

D

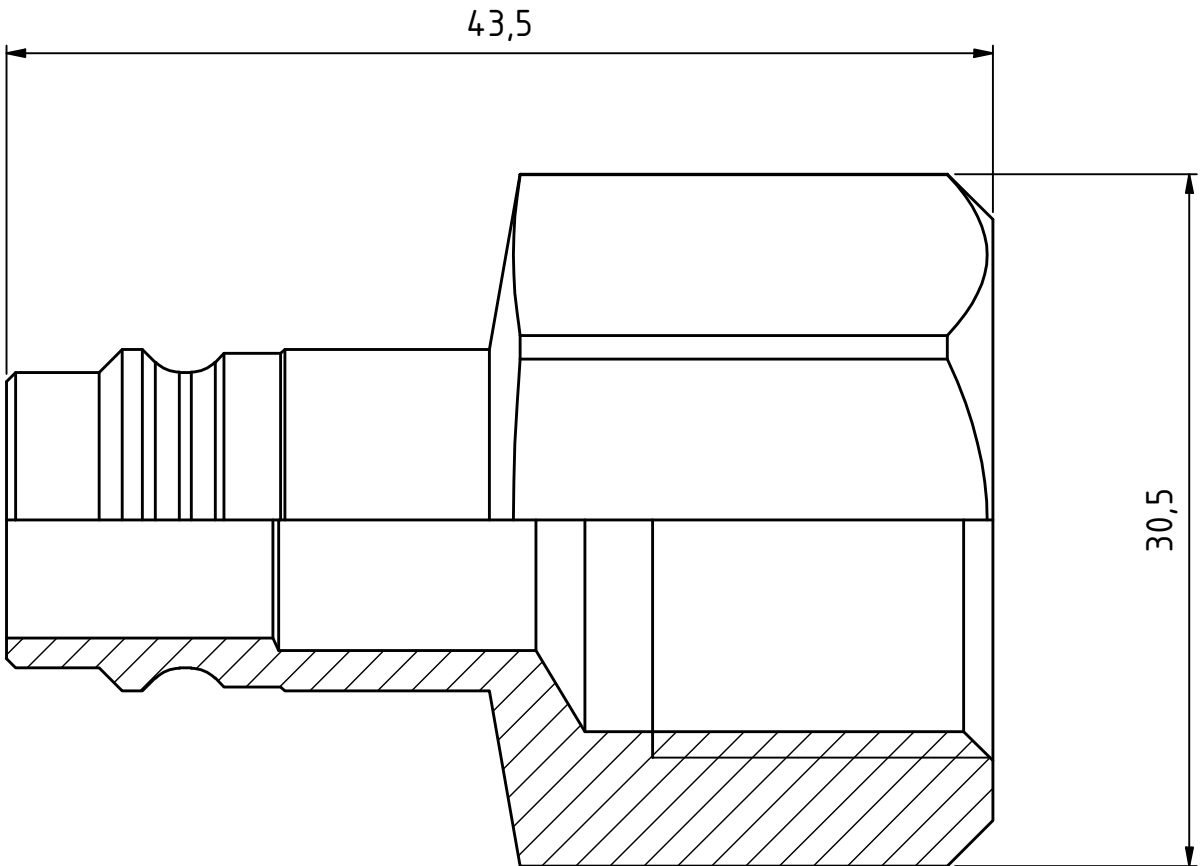
C

B


A



1 : 1



Product No. 104105205	
Nominal flow Ø DN:	10.4 mm
Connection Stroke:	mm
Max WP Connected:	16 bar
Min BP Connected:	64 bar
Temperature range:	°C - °C
Connection:	G 1/2" Fem
Sealing material:	
Hexagon:	27

1	1	Nipple	Hard. Steel, FeZn 8 P1		094106325	
Item	Qty	Description	Material		Part Number	
		Scale 3 : 1	Drawn CABLHE	Checked PGU	Appr. JOOL	ECO 11783
		Drawing No. 104105205				Date 2017-08-17
Assembly Drawing					Issue B	Sheet 1 /(1)