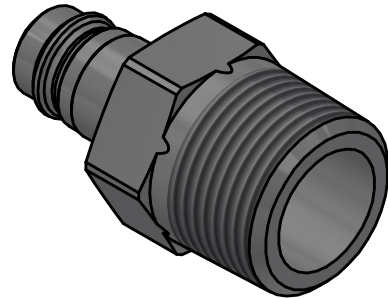
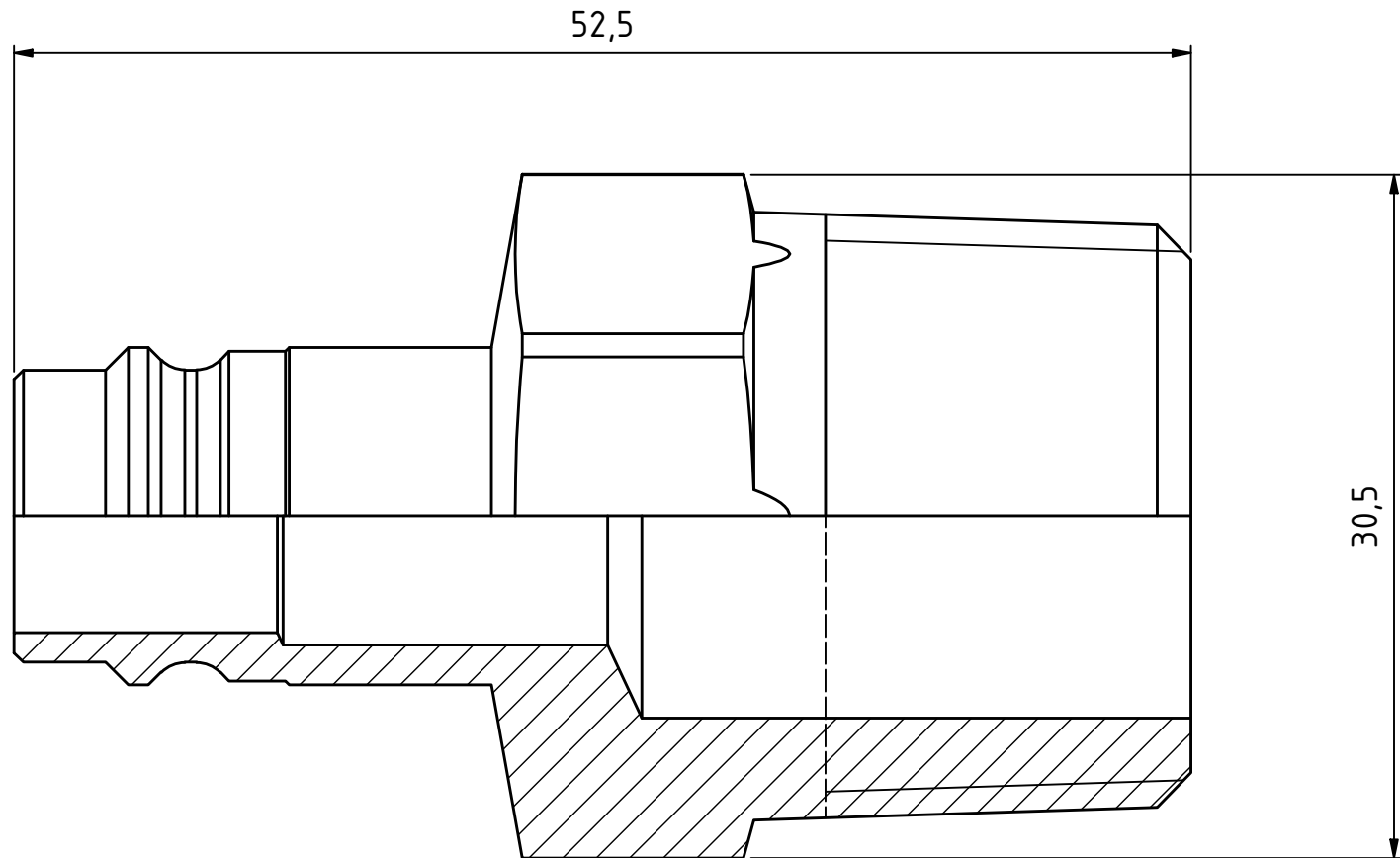


This document must not be copied, either completely or in part, without permission. Any infringement will have legal consequences ©




A3



1 : 1

|                       |             |
|-----------------------|-------------|
| Product No. 104105157 |             |
| Nominal flow Ø DN:    | 10,4 mm     |
| Connection Stroke:    | mm          |
| Max WP Connected:     | 16 bar      |
| Min BP Connected:     | bar         |
| Temperature range:    | °C - °C     |
| Connection:           | R 3/4" Male |
| Sealing material:     |             |
| Hexagon:              | 27          |

|   |     |                            |                 |                        |               |              |                    |
|---|-----|----------------------------|-----------------|------------------------|---------------|--------------|--------------------|
| 1   | 1   | Nipple                     |                 | Hard. Steel, FeZn 8 P1 |               | 094106417    |                    |
| Item  | Qty | Description                |                 | Material               |               | Part Number  |                    |
|  |     | Scale<br>3 : 1             | Drawn<br>CABLHE | Checked<br>PGU         | Appr.<br>JOOL | ECO<br>11783 | Date<br>2017-08-17 |
|   |     | Assembly Drawing 104105157 |                 |                        |               | Issue<br>B   | Sheet<br>1 /(1 )   |