

This document must not be copied, either completely or in part, without permission. Any infringement will have legal consequences ©



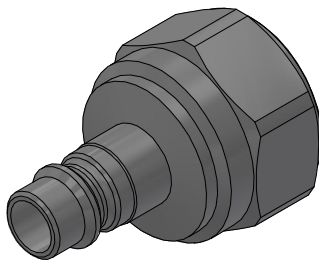
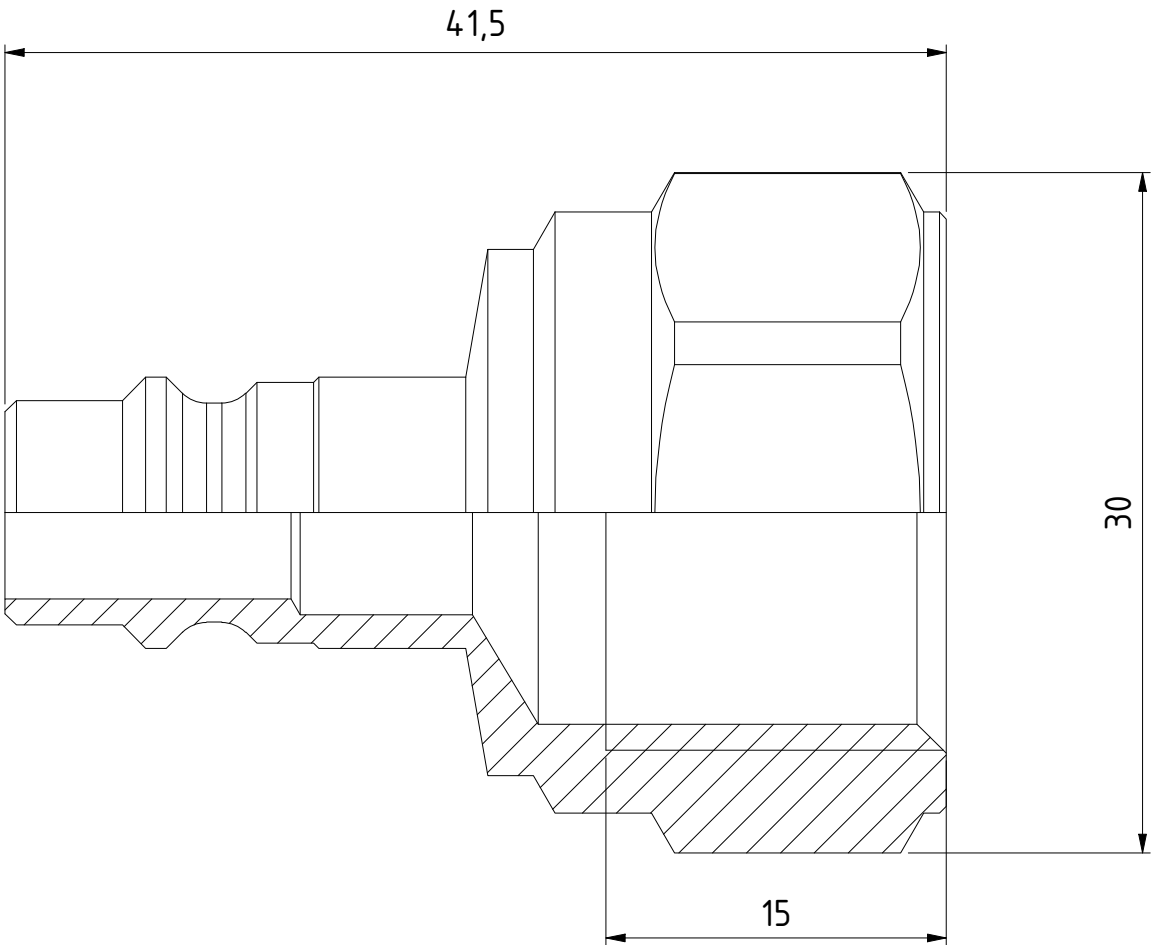
A3

D

C

B

A



1 : 1


D

C

B

A

Product No. 103205205	
Nominal flow Ø DN:	7,6 mm
Connection Stroke:	mm
Max WP Connected:	16 bar
Min BP Connected:	140 bar
Temperature range:	-20°C - +100°C
Connection:	G 1/2" Fem
Sealing material:	
Hexagon:	27

1	1	Nipple			Hard. Steel FeZn 8 P1			093206325	
Item	Qty	Description			Material			Part Number	
		Scale	Drawn	Checked	Appr.	ECO	Date		
		3 : 1	CABLHE	PGU	JOOL			2017-04-18	
		Assembly Drawing			Drawing No. 103205205		Issue	Sheet	
B	1 /(1)								



Assembly Drawing 103205205

Issue

B

Sheet

1 /(1)