

This document must not be copied, either completely or in part, without permission. Any infringement will have legal consequences ©



A3

D

C

B

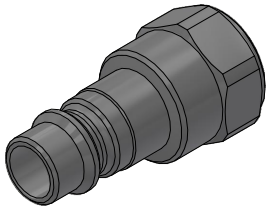
A

D

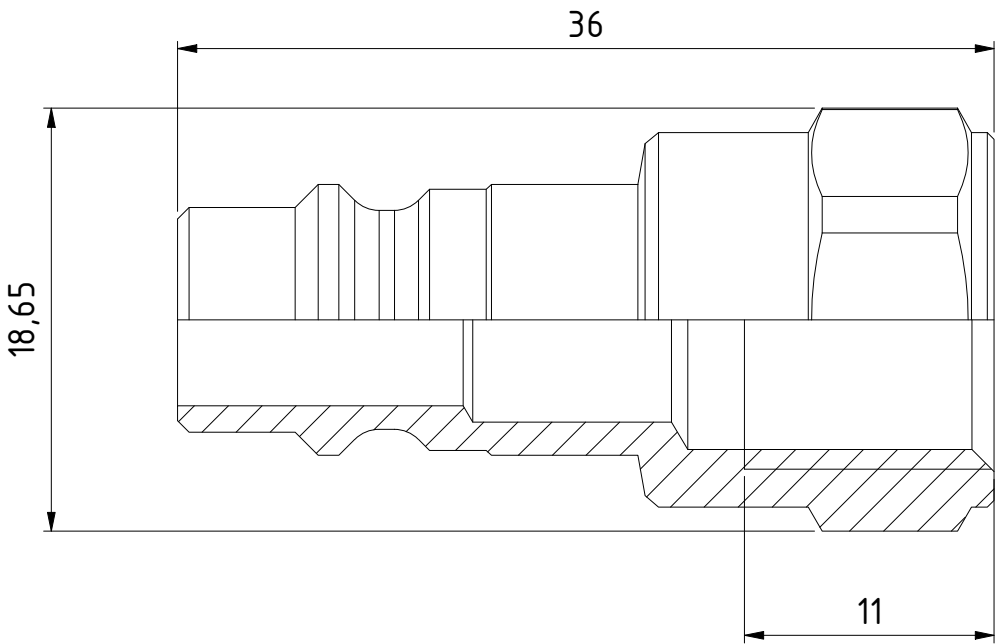
C

B

A



1 : 1



Product No.	103205202
Nominal flow Ø DN:	7.6 mm
Connection Stroke:	mm
Max WP Connected:	16 bar
Min BP Connected:	140 bar
Temperature range:	-20°C - +100°C
Connection:	G 1/4" Fem
Sealing material:	
Hexagon:	17

1	1	Nipple	Hard. Steel FeZn 8 P1	093206322
Item	Qty	Description	Material	Part Number
		Scale 3 : 1	Drawn CABLHE	Checked PGU
		Appr. JOOL	ECO	Date 2017-04-18
Assembly Drawing 103205202				Issue B
				Sheet 1 /(1)