

This document must not be copied, either completely or in part, without permission. Any infringement will have legal consequences ©



A3

D

C

B

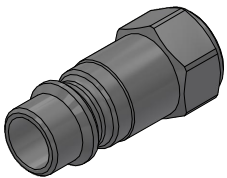
A

D

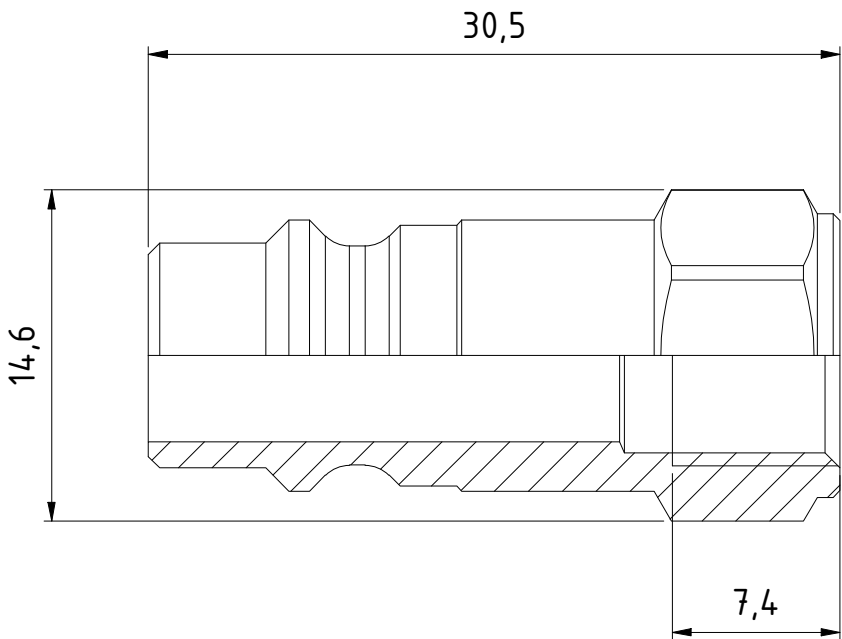
C

B

A



1 : 1



Product No. 103205201

Nominal flow Ø DN: 7.6 mm
Connection Stroke: mm
Max WP Connected: 16 bar
Min BP Connected: 140 bar
Temperature range: -20°C - +100°C
Connection: G 1/8" Fem
Sealing material:
Hexagon: 13

1	1	Nipple	Hard. Steel FeZn 8 P1			093206321	
Item	Qty	Description	Material			Part Number	
		Scale 3 : 1	Drawn CABLHE	Checked PGU	Appr. JOOL	ECO	Date 2017-04-18
		Drawing No. Assembly Drawing 103205201				Issue B	Sheet 1 /(1)