

This document must not be copied, either completely or in part, without permission. Any infringement will have legal consequences ©



A3

D

C

B

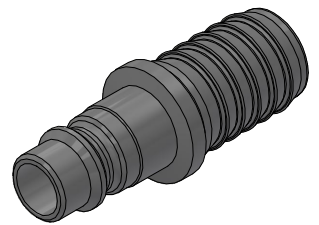
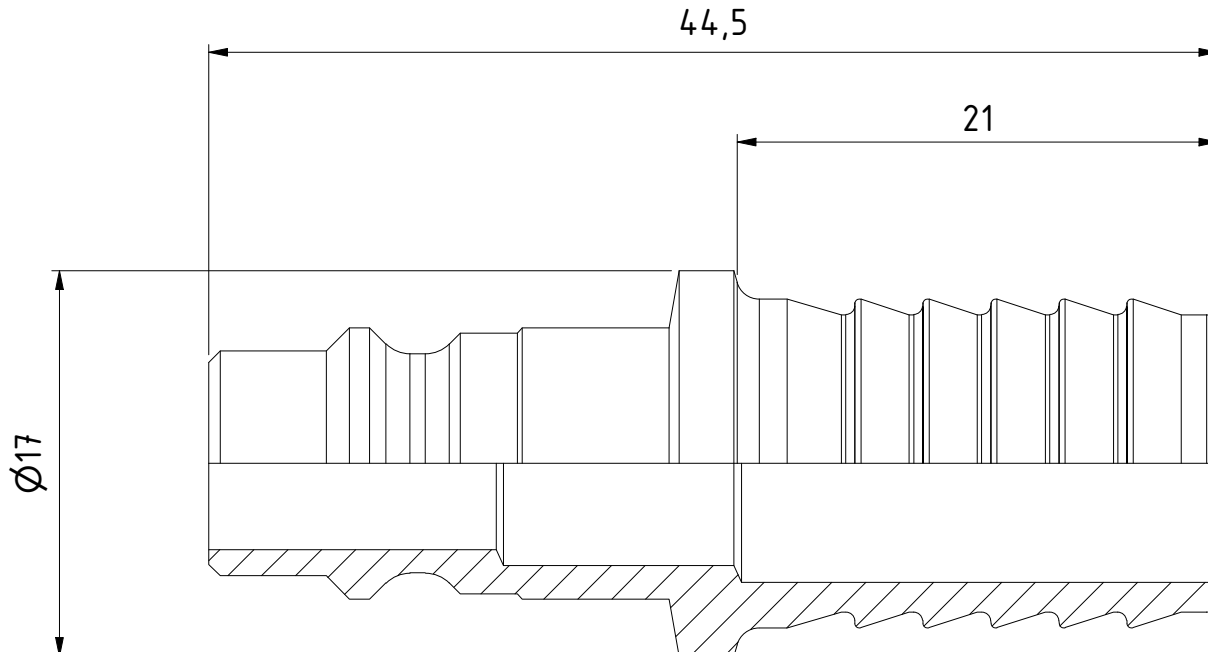
A

D

C


B

A



1 : 1

Product No. 103205005	
Nominal flow Ø DN:	7,6 mm
Connection Stroke:	mm
Max WP Connected:	16 bar
Min BP Connected:	140 bar
Temperature range:	-20°C - +100°C
Connection:	Hose 1/2" 13,0mm
Sealing material:	
Hexagon:	

1	1	Nipple		Hard. Steel FeZn 8 P1		093206205	
Item	Qty	Description		Material		Part Number	
		Scale	Drawn	Checked	Appr.	ECO	Date
		3 : 1	CABLHE	PGU	JOOL		2017-04-18
		Assembly Drawing					Drawing No.
					103205005	B	Sheet
							1 /(1)