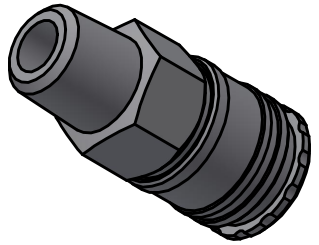
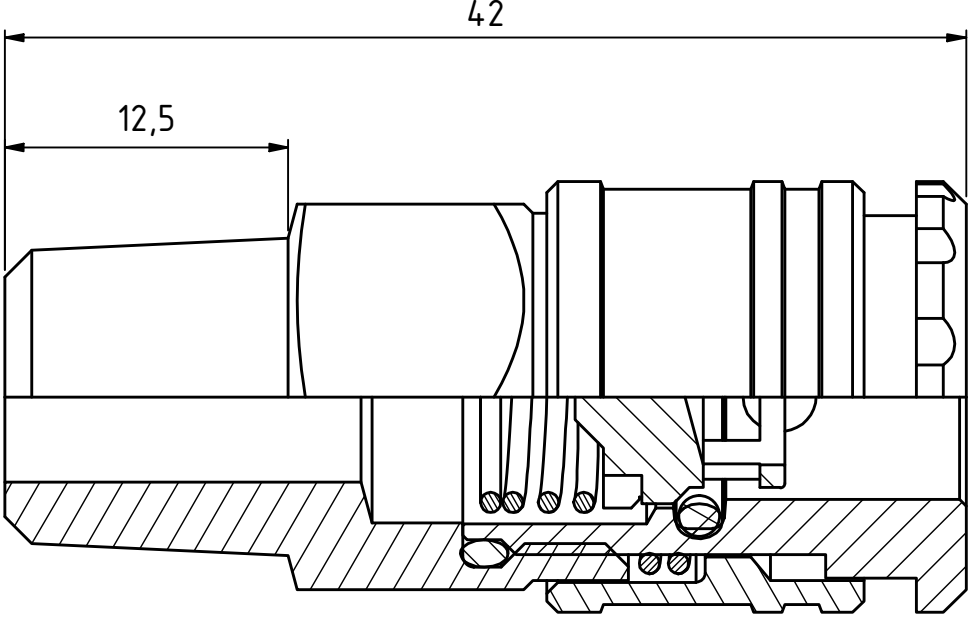
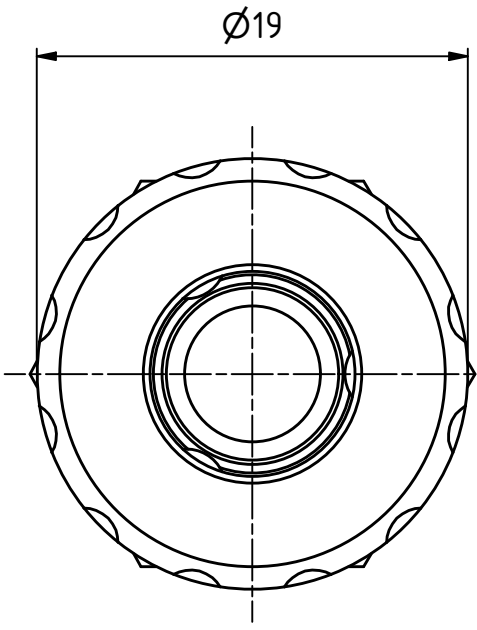
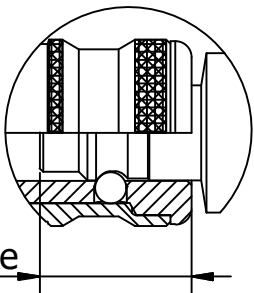


This document must not be copied, either completely or in part, without permission. Any infringement will have legal consequences ©



1 : 1



Connection stroke

Product No. 102201452	
Nominal flow Ø DN:	5 mm
Connection Stroke:	30 mm
Max WP Connected:	35 bar
Min BP Connected:	140 bar
Temperature range:	-30°C - +100°C
Connection:	1/4" NPT Male
Sealing material:	NBR
Hexagon:	17

9	3	Ball	Stainless Steel	
8	1	O-ring	NBR	
7	1	O-ring	NBR	
6	1	Spring	Stainless steel	
5	1	Spring	Stainless steel	
4	1	Locking sleeve	Brass, CuNi5b	
3	1	Back part	Brass	
2	1	Valve	Brass	
1	1	Front part	Brass	
Item	Qty	Description	Material	
State		Drawn	Checked	Approved
Production		CABALAL	LIJA	JOOL
		ECO		Former No.
				Date
				2024-08-08
				Scale
				3 : 1
				Issue
				A
				Sheet
				1 /(1)



Coupling 1/4" NPT male NBR

Drawing No.
102201452