

This document must not be copied, either completely or in part, without permission. Any infringement will have legal consequences ©



A3

D

C

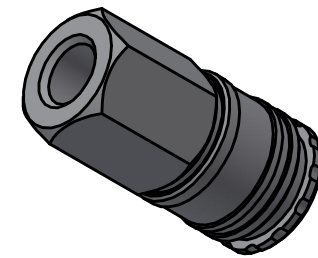
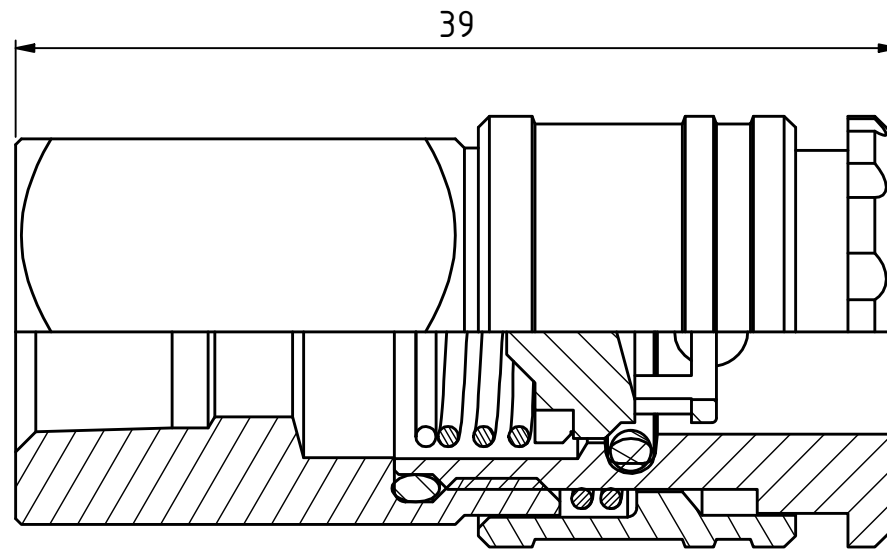
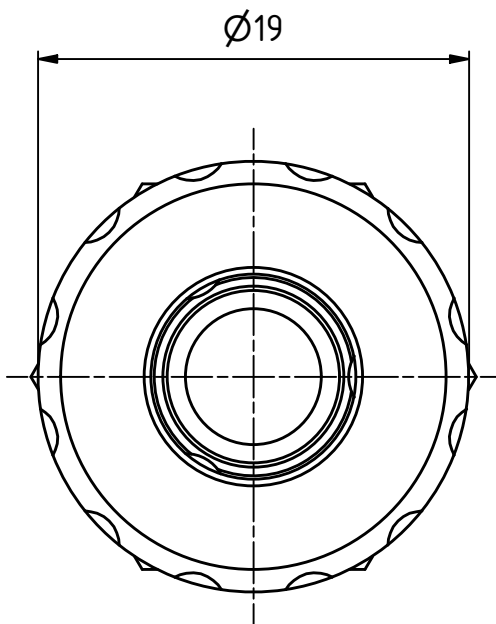
B

D

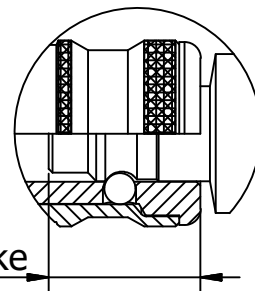
C

B

A



1 : 1




Connection stroke

Product No. 102201401

Nominal flow Ø DN: 5 mm
Connection Stroke: 13 mm
Max WP Connected: 35 bar
Min BP Connected: 140 bar
Temperature range: -30°C - +100°C
Connection: 1/8" NPT Fem
Sealing material: NBR
Hexagon: 17

9	3	Ball	Stainless Steel
8	1	O-ring	NBR
7	1	O-ring	NBR
6	1	Spring	Stainless steel
5	1	Spring	Stainless steel
4	1	Locking sleeve	Brass, CuNi5b
3	1	Back part	Brass
2	1	Valve	Brass
1	1	Front part	Brass
Item	Qty	Description	Material

State Production	Drawn CABALAL	Checked LIJA	Approved JOOL	Date 2024-08-08
 Coupling 1/8" NPT fem NBR		ECO	Former No.	Scale 3 : 1
		Drawing No. 102201401	Issue A	Sheet 1 /(1)