

This document must not be copied, either completely or in part, without permission. Any infringement will have legal consequences ©



A3

D

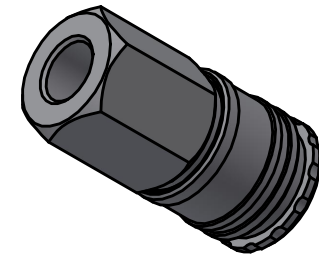
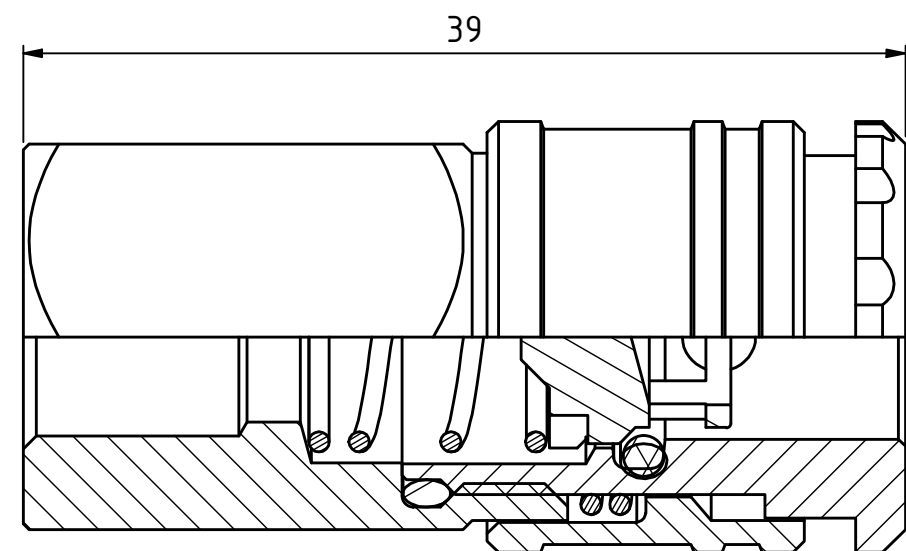
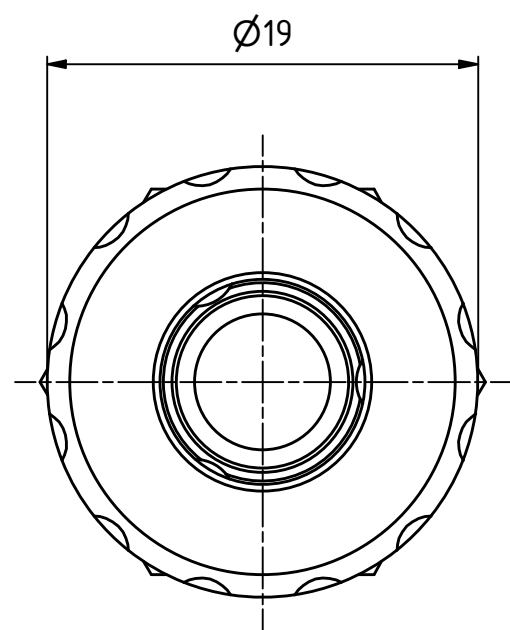
C

B

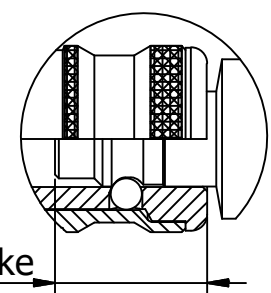
D

C

B




1 : 1



Connection stroke

Product No. 102201201	
Nominal flow Ø DN:	5 mm
Connection Stroke:	13 mm
Max WP Connected:	35 bar
Min BP Connected:	140 bar
Temperature range:	-30°C - +100°C
Connection:	G 1/8" Fem
Sealing material:	NBR
Hexagon:	17

9	1	Back part	Brass				
8	1	Spring	Stainless steel				
7	1	Spring	Stainless steel				
6	1	Valve	Brass				
5	1	O-ring	NBR				
4	1	O-ring	NBR				
3	1	Locking sleeve	Brass, CuNi5b				
2	3	Ball	Stainless Steel				
1	1	Front part	Brass				
Item	Qty	Description	Material				
State Production		Drawn CABALAL	Checked LIJA	Approved JOOL	Date 2024-08-08		
 Coupling G 1/8" fem NBR		ECO		Former No.		Scale 3 : 1	
		Drawing No.				Issue	Sheet
		102201201				A	1 /(1)